

# countynews

CORNWALL FEDERATION OF WOMEN'S INSTITUTES

Volume 1, Issue 10 • 32p

November/December 2017



## *Inside This Issue ...*

- |                                       |        |
|---------------------------------------|--------|
| New NFWI Photography Competition      | Page 2 |
| 2018 Royal Cornwall Show Competitions | Page 4 |
| A Day of Cornish Art                  | Page 5 |
| A Big Christmas Quiz                  | Page 7 |

**theWI**  
INSPIRING WOMEN







### FEDERATION OFFICE

Chy Noweth an Conteth  
Truro Business Park, Threemilestone  
Truro TR4 9NH – T: 01872 272843

Email: General Enquiries:  
cfwi@btconnect.com

Federation Secretary:  
cfwisecretary@btconnect.com

Accounts: cfwiaccounts@  
btconnect.com

Reception: cfwireception@  
btconnect.com

Website: <http://cornwallwi.org.uk>

Facebook: [www.facebook.com/  
CornwallFederationof  
womensinstitutes](http://www.facebook.com/CornwallFederationofWomensInstitutes)

### OFFICE OPENING HOURS

9am - 4:30pm  
Monday - Thursday

### FEDERATION CHAIRMAN

To be confirmed, due to early  
publication of *County News*

### FEDERATION TREASURER

To be confirmed, due to early  
publication of *County News*

### COUNTY NEWS EDITOR

To be confirmed, due to early  
publication of *County News*  
Email: [cfwi.publications@gmail.com](mailto:cfwi.publications@gmail.com)

### THANKS TO PRAZE-AN-BEEBLE WI FOR PACKING NOVEMBER/DECEMBER COUNTY NEWS

### NATIONAL FEDERATION OF WOMEN'S INSTITUTES

104 New Kings Road,  
London, SW6 4LY  
Tel: 0207 371 9300  
Fax: 0207 736 3652  
Email: [hq@nfwi.org.uk](mailto:hq@nfwi.org.uk)  
Web: [www.thewi.org.uk](http://www.thewi.org.uk)

### DENMAN

Marcham, Abingdon  
Oxfordshire, OX13 6NW  
Tel: 01865 391991  
Email: [info@denman.org.uk](mailto:info@denman.org.uk)  
Web: [www.denman.org.uk](http://www.denman.org.uk)

### PUBLISHED BY

Cornwall Federation of  
Women's Institutes

### DEADLINE FOR INCLUSION IN COUNTY NEWS

Items to be sent to the Editor by  
12<sup>th</sup> of the month, two months  
prior to publication. No late  
entries can be accepted.

### DESIGNED

Holly Daniels

### ADVERTISING

Jo Marchant - Tel: 01536 526674

### PRINTED



## NOTES FROM THE OFFICE

### 200+ CLUB

July winner of £47 –  
Wendy Smith, Launceston WI

### OFFICE CHRISTMAS CLOSING DATES

Please note that the office at  
Chy Noweth an Conteth will  
close at 4:30pm on Thursday  
21st December 2017 and will  
re-open at 9am on Tuesday 2nd  
January 2018.

### CHANGE TO COUNTY NEWS DEADLINE DATE

Please note that we will have  
an earlier deadline date for  
submitting articles to *County  
News* in December. The  
deadline for the February  
issue will be Tuesday 5th  
December, rather than  
12th December. This is in  
order to accommodate the  
Christmas closing dates of our  
printer. Thank you for your  
understanding.

### ARE YOU ONLINE?

Do you follow our Facebook  
page? Come on over and have a  
look! There's always something  
happening! We are now also on  
Twitter! Follow us at:  
[@wi\\_cornwall](https://twitter.com/wi_cornwall).



### YEARBOOK AMENDMENTS

• Page 16: Hilary Veal's email  
address (Trading Post sub-  
committee) should be

### CAR INSURANCE FOR WI MEMBERS

Where a member provides  
transport for other WI  
members when on WI  
activities, they should check  
their legal position with  
their insurance companies  
by writing to them in the  
following terms:

"From time to time I find  
it necessary to use my/my  
husband's car in connection  
with WI activities, such as the  
collection of other members  
to take to functions or the  
carrying of items to sales of  
work and the like. The WI  
members reimburse me with  
my petrol costs for these  
activities but there is no  
question of my making a  
profit. Please confirm that  
these activities fall within the  
scope of my/my husband's  
motor insurance."

### CAR PARK UPDATE

Those of you who have visited  
Chy Noweth an Conteth  
recently may have noticed  
some changes! Work has been  
done to improve the grounds,  
including the drainage of the  
lower end of the car park.



## DIARY UPDATES

### NOVEMBER/DECEMBER DIARY DATES

2nd November – Fungus Foray  
6th November – Shopping  
Event at M&S Truro  
16th, 21st and 29th November  
– Christmas Corner Craft Days  
23rd November –  
Clark's Village Christmas  
Shopping Trip  
28th November –  
Speakers' Auditions Day  
1st December –  
Christmas Wreaths Workshop  
4th and 8th December –  
Christmas County Lunches  
6th December – Christmas  
Concert at Eden Project

### NOVEMBER/DECEMBER CLOSING DATES

8th December –  
Gardening Challenges

## COVER PHOTO



(Left to right) Sue Marks,  
Jenny May and Janet Morgan,  
all of Bude WI, sample the  
wares at Knightor Winery on a  
recent CFWI visit.

## FEDERATION MATTERS

The Cornwall Federation  
of WIs would like to wish  
all our members a very  
Happy Christmas!



### CHANGES TO CLAIMING GIFT AID

Please note that the Gift Aid  
guidance for WIs has been  
updated. From 2018, the  
Federation and NFWI share of  
the membership subscription  
will not form part of the WI's  
income, and the WI will only  
be able to claim Gift Aid on the  
WI's share of the subscription.

It is recommended that any  
WIs that participate in the Gift  
Aid Scheme submit claims that  
include subscriptions up to and  
including 2017 prior to 31st  
December 2017.

### CONGRATULATIONS TO OUR SOCIAL MEDIA COMPETITION WINNERS!

This year marked the  
inaugural CFWI Social  
Media Competition in which  
WIs were invited to submit  
their social media efforts for  
judging. Our judge looked for  
websites and Facebook pages  
that were welcoming, friendly  
and up-to-date.

Congratulations go to winners  
Crowlas & Ludgvan WI and  
to runners up Zennor WI.  
We hope more and more WIs  
will begin to embrace social  
media in the coming years and  
will see how it can help them  
communicate with members  
and boost membership. Do  
consider putting together an  
entry from your WI next year.

### NEW NFWI PHOTOGRAPHY COMPETITION: A YEAR IN YOUR WI

Inspired by members' talent  
and love of photography, the  
NFWI Science & Leisure  
Committee invites WIs  
to submit a collection of  
photographs depicting a year  
in their WI.

Running from January  
through December 2018,  
WIs are invited to compose a  
selection of no more than 12  
photographs representing a

year in their WI. Photographs may be taken monthly or at various events and activities attended or organised by the WI throughout the year. The chosen 12 photographs may be displayed in any way chosen by the WI; i.e., calendar, photobook, scrapbook or simply individual, mounted photographs.

WIs must send their entry (one entry per WI) to the CFWI office for initial judging. Up to three entries will then be selected to go forward for national judging.

All details regarding this competition are available to download from the MyWI site.

Please submit your WI's photos to CFWI by 28th February 2019. We realise the deadline date is more than a year away, but wanted to give you advance notice of this exciting competition so that you could begin taking photographs in January!



#### A VISIT TO KNIGHTOR WINERY

Over 60 members from WIs all over Cornwall met recently for a wine tour and lunch at Knightor Winery in St Austell.

One of Knightor's winemakers gave the members an informative talk on the process, from the growing of the vines to the finished product. Knightor's vines are grown at their vineyards in Seaton and Portscatho on south facing slopes and the grapes are then brought to the St Austell winery for processing. The white, rosé and sparkling varieties produced by Knightor are all suited to the growing conditions and climate here on the south coast.

Wine tasting followed the talk and tour, coupled with a delicious ploughman's lunch. Afterwards, enthusiastic members were keen to purchase wines to take home. One member commented how nice it was to socialise with other WI members, and the Knightor staff reported that we were "a lovely bunch of ladies"!

#### CAMPAIGN ACTION

As you know, at the last NFWI Annual Meeting, two resolutions passed with overwhelming support: 'Link Together to Alleviate Loneliness' and 'End Plastic Soup'. In fact, the latter passed with a whopping 98.9% majority.

NFWI have produced some very good campaign action packs, which have been sent to all WIs, with lots of straightforward ideas about how you can make a difference – including handy template letters to send to lobby MPs and other stakeholders. Good stuff. So if you have not done so already, have a look at the packs and see what your WI

can do. One member of the CFWI Board of Trustees contacted her MP about alleviating loneliness and was amazed at how quickly and positively he responded!

The Public Affairs team at NFWI are always very helpful too, and delighted to hear what you have in mind. They will send you campaign materials (posters, bunting, leaflets, etc.) which make it much easier to raise awareness of these issues. You can contact NFWI at [publicaffairs@nfwf.org.uk](mailto:publicaffairs@nfwf.org.uk). And don't forget to send pictures of your events or ideas to *County News*! Good luck.



#### CFWI CHRISTMAS CONCERT

**Wednesday 6th December**  
**EDEN PROJECT**  
**From 6:45pm**

If you haven't yet applied for a ticket for our Christmas Concert at the Eden Project, there may still be spaces available. The closing date is Tuesday 31st October, but we are inviting late applications in case we have spare tickets.

This will be a magical evening featuring our own Federation Choir along with the brilliant Bodmin Brass Band. The doors to the

Mediterranean Biome will open for us at 6:45pm and a hot drink will be available for you before the concert.

Your ticket includes your entrance, a drink and biscuit on arrival, your programme and a raffle ticket. It will be chilly in the biome so dress warmly and bring a torch or a phone with a light to read by as there will be subdued lighting only.

The application form and further information were sent to your WI with the October issue of *County News*.

**Cost:** £7

**Closing Date:** Late applications welcome up to Thursday 30th November, space permitting

**Contact:** Liz Llewellyn-Jones

Julia Havard

#### TREASURERS' SURGERY

The next Treasurers' Surgery will be held at Chy Noweth an Conteth on Wednesday 29th November. If you are your WI's Treasurer and need help with resolving a problem with your accounts, or if you would simply like to discuss anything to do with your WI's accounts, please contact our Treasurer Designate, Alison Latham, to make an appointment.

**Country Skittles** Don't forget your Christmas Party!

- Traditional 9 pin Skittle Alleys
- Special WI package deals
- Fantastic Restaurant
- Lots of Board Games
- Fun For Everyone
- Very warm welcome

**01736 850209**

TOWNSHEND HAYLE  
CORNWALL TR27 6ER

**OPENING TIMES**  
 Mon to Fri - 6pm to 11pm  
 Saturday - Noon to 11pm  
 Sunday - Noon to 10:30pm



## ROYAL CORNWALL SHOW CUP



The 2018 Royal Cornwall Show will be held on the 7th, 8th and 9th June 2018. The 2018 Royal Cornwall Show Cup Competition is organised by our Home Economics and Craft sub-committee.

The schedule is as follows:

“A Picnic on the Beach”

A staged exhibit reflecting the theme must include the following:

1. An item of craft to suit the theme – any medium (20 marks)
2. A second item of craft – any medium, also to suit the theme, but different craft to that above in 1. (20 marks)
3. A savoury item of cookery (20 marks)
4. A sweet item of cookery (20 marks)
5. An item made from beachcombing finds (this could include dried plant material but will be judged as a craft not floral art which uses

different criteria for judging) (20 marks)

Points will be awarded as above plus 20 points for staging – a total of 120. Please note that this year there will be no marks awarded for interpretation. Please note that no cubicles or backboards are to be used but a base may be used.

### Further guidelines for the Royal Cornwall Show Cup competition:

1. The base may be covered in any medium relevant to the theme, and height may be achieved within the space using additional objects as part of the presentation.
2. We are looking for two different crafts, which could be a garment, an accessory, or an object relevant to the theme (thus, two beach towels would not be appropriate as being the same article). They will need to be made using two different

mediums and skills (e.g., needlecraft, sewing, knitting, embroidery, paper craft, jewellery, painting, etc.)

3. The two items of cookery should be one savoury and one sweet showing different skills (e.g., not two pastry items).
4. As an alternative to traditional floral art we have included an object made using beachcombing finds. This could be an arrangement of dried foliage and flowers but will be judged using craft marking criteria not floral art. ALL craft and cookery items should be relevant to the theme and this will be reflected in the marks awarded.
5. The overall presentation mark will also consider how appropriate the display is in illustrating the theme as well as its aesthetic appeal.

Hopefully, this will clarify any questions you may have regarding the schedule.

### BARBARA REED TROPHY COMPETITION

The schedule for the Barbara Reed Trophy competition, also organised by the Home Economics and Craft sub-committee, is as follows:

“A beach bag”

1. A beach bag as above, any medium
2. The bag can be any shape but must fit into a 20” cube

3. Only one entry per member

### FLORAL ART COMPETITIONS

Floral Art competitions are organised by the Floral Art and Gardening sub-committee and are as follows:

1. Wadebridge Cup 56 cm x 56 cm exhibit – “The Beachcomber”
2. Smale Cup 10 cm x 10 cm miniature exhibit – “Shell Seekers”
3. Penponds Cup 56 cm x 56 cm exhibit – “Beach Party”
4. Pat Ward Novice Cup\* 56 cm x 56 cm exhibit – “Buckets and Spades”

\*A novice is a person who has not won first prize in WI section of Royal Cornwall Show.

Best Floral Art award (perpetual) in these classes.

Fresh plant material to predominate (no artificial permitted). Accessories allowed in all classes. No accessories, drapes or mechanics may be attached to staging or backing.

For full details on all competitions, please see schedules and entry forms sent with November/December *County News*.

Closing date for entries in all competitions is Saturday 31st March 2018.



We are an independent Cornish company, suppliers of Straight or Curved Stairlifts, New or Reconditioned Stairlifts, Step Lifts, Platform Lifts, Porch Lifts, Access Lifts, and Through the Floor Lifts. We offer a Free Site surveys and quotations by our friendly courteous staff.

Call us NOW to discuss your requirements or order a FREE brochure on

**01736 763580**

[www.dolphinstairlifts.co.uk](http://www.dolphinstairlifts.co.uk)

**DOLPHIN**

## ACTIVITY AND LEISURE

### 'LET'S GO' TROPHY COMPETITION

You are invited to submit a report in poetry format or prose, along with illustrations or photos, on any Activity & Leisure event you have attended by the end of 2017.

You may have participated in some of our events, but we have new ones coming up in the near future, which may provide more food for thought. So far, in 2017, we've held the Rosebowl Quiz and the Girls' Day In at Chy Noweth. Coming up later this year is our Fungus Foray!

Please send your entries to CFWI by Thursday 11th January 2018, including your name, the name of your WI and a SAE.

Enquiries to  
Sandra Buck –  
\_\_\_\_\_  
\_\_\_\_\_  
\_\_\_\_\_

### NOT THE CHRISTMAS QUIZ Monday 27th November

Due to unforeseen circumstances, the advertised quiz has been cancelled. Please look out for details of a New Year Quiz in the near future.

## COMBINED ARTS



### A DAY OF CORNISH ART Friday 16th March 2018 WITHIEL VILLAGE HALL

**10:30am – 4pm**  
Join us for a day in the company of two well-known art experts.

Viv Hendra's presentation will be on the life and work of the Cornish artist, John Opie, about whom he has published the standard work *The Cornish Wonder: A Portrait of John Opie*. Viv travels extensively as a lecturer on different aspects of art, particularly Cornish. After a career as a teacher, he spent 15 years with the much-acclaimed Lander Gallery.

Lawrence Hendra, nephew of Viv, is Director and Head of Research at the gallery of Philip Mould & Co., Pall Mall, London. He has identified a number of previously lost works including a rare portrait of Mary, Queen of Scots, painted within her lifetime. Lawrence also works as a specialist on BBC1's *Antiques Roadshow*.

This is a day not to be missed! Coffee/tea will be available from 10-10:30am and again during the lunch break. Please bring a packed lunch.

**Cost:** £9  
**Closing Date:** Friday 2nd February 2018  
**Contact:** Veronica Gray  
\_\_\_\_\_  
\_\_\_\_\_

### 2018 PHOTOGRAPHY COMPETITION

The classes for the 2018 Photography Competition are "People", "Flora and Fauna", "Landscape, Seascape or Cityscape" and, should you have a fantastic image that doesn't fit into these categories, there is "My Favourite Photo". The fifth class is for anyone who has never won a first prize in a CFWI photography competition and it is "My Favourite Photograph (novice)". The winning photographs will be displayed at Spring Countdown and at Stithians Show, both in 2018. The overall winner will be awarded the Greeves Trophy.

Full details and an entry form are on a flyer enclosed in your WI's monthly mailing.

Closing date Wednesday 28th February 2018.  
For further information, please contact Val Strout  
\_\_\_\_\_  
\_\_\_\_\_

### ALL THE WORLD'S A STAGE

Recently, a drama workshop was held at Chy Noweth. Topping the list of what

members expected to get from the day was the confidence to get up and speak in public. Event leader Liz Llewellyn-Jones began by demonstrating how to introduce yourself with aplomb, saying something memorable about yourself and using grand gestures rather than just speaking your name. This brought forth not just, "I'm a member of xyz WI", but such gems as, "I milk cows"!

The next exercise was to improve diction by reading tongue twisters aloud. This produced gales of laughter!

Participants were then relaxed enough to do some acting. They were split into groups of four to discuss and produce a short sketch based on a fairy tale, with no written script and using only items in the room as props. The WI proved that they are no strangers to innovation – a scarf served as a witch's cowl, a baby's blanket and even a magic carpet.

Each group acted out its two-minute play-let for the rest to guess the story. This proved no problem, especially with loud oinks from the three little pigs!

Altogether, the day was a great success and everyone came away happy. If you missed it, don't worry – due to popular demand, another workshop will be scheduled soon!



## 2 LUXURY STATIC HOLIDAY CARAVANS FOR HIRE GOLDENSANDS HOLIDAY PARK MABLETHORPE



**Bermuda 8 Berth**



The Caravans are comfortable, clean and spacious. Central and electric heating throughout, with a fully equipped kitchen area.

Both have extra wide showers, with separate toilets. The large lounges have comfortable seating a TV,

DVD and CD player, with a second TV in the double bedroom.

Both are situated together with a large grass area at the front with outdoor tables and chairs.

The caravans are available for hire from 10th March to 20th November

3 Nights Fri - Mon 4 Nights Mon - Fri 7 Nights Fri - Fri

Booking **MUST** be made through [eastuk-holidays.com](http://eastuk-holidays.com)

Look for - **Bermuda 8 Berth** or **Richmond 8 Berth**



## EXHIBITIONS



### JOIN THE EXHIBITIONS TEAM!

Have you ever wondered who puts together the furnishings for the spring and autumn meetings at the Hall for Cornwall, or the Royal Cornwall and Stithians Shows?

It is our Exhibitions sub-committee. I invite you to come and join us!

We meet three times a year to discuss the events. Why not come along to our next meeting to find out what we're about. We are a great team of women from all over the County.

For more information, contact:

Fran Winsor

(or ring the CFWI office).



## CUTTINGS FROM FLORAL ART & GARDENING

### GARDENING CHALLENGES Saturday 20th January 2018 MARAZION COMMUNITY CENTRE 10:30am – 3:30pm

Lottie Allen, Head Gardener at St Michael's Mount, will speak to us about the Mount's beautiful gardens and the seemingly impossible task of gardening in those conditions. This should be particularly helpful for those of us who try to garden near the sea! A further delight will be a talk from Ian Wright MCIHort, Consultancy Manager (Garden Specialist), National Trust, South West Region, on "Plant Conservation: Can We Meet the Challenge?".

You are welcome to bring along some samples from your own garden and learn how to present them should you wish to enter your local show. Members of the committee from the West Cornwall Show will be there to explain and assist as you set up your entry.

A light lunch of soup, a roll and a piece of cake will be available to buy. We will need an idea of numbers for this.

**Cost:** £15  
**Closing Date:** Friday 8th December  
**Contact:** Abigail Kirby-Harris



### FLOWER ARRANGING WORKSHOPS Wednesday 7th March 2018 HAYLE RUGBY CLUB and Saturday 10th March 2018 WYPAC CENTRE, WADEBRIDGE 10:30am - 4pm

This year's Royal Cornwall Show saw yet another increase in the number of members entering the Floral Art competitions – and what a joy they were to behold! Mary Bedwell, who attended one of our workshops, won the Pat Ward Cup! Jolly well done!

We are running two more workshops this year, once again with our own Edna Trudgeon who will demonstrate and give lots of hints and tips and practical advice – and she will have with her the schedules for the various 2018 shows around the County so you can have a go and get some practice. These workshops are suitable for all standards, so don't be afraid if you feel you are just a beginner!

Both venues have proved very popular before, with plenty of parking. There are lots of lovely little cafés in Wadebridge but you will probably want to bring a packed lunch and keep working on!

**Cost:** £16  
**Closing Date:** Friday 19th January 2018  
**Contact:** Hayle event: Teresa Hancox

Wadebridge event: Felicity Penneycard



A spacious 1 bedroom apartment with shared swimming pool. The apartment is situated on the top floor of a 3 storey block.

Quiet location, but only 5 mins walk to the marina and another 5 mins to the town centre.

#### PRICES:

|             |      |             |      |
|-------------|------|-------------|------|
| Jan - March | £225 | July/August | £475 |
| April       | £300 | Sept        | £375 |
| May         | £325 | Oct         | £325 |
| June        | £375 | Nov/Dec     | £250 |

Phone Judith on  
**01536 711884**

[www.algarveestatemangement.co.uk/property/apartment-meia\\_19477](http://www.algarveestatemangement.co.uk/property/apartment-meia_19477)

You could be in the Algarve,  
relaxing in the sun...





# Christmas People Quiz

Name the following famous people whose names might be associated with Christmas



1



2



3



4



5



6



7



8



9



10



11



12



13



14



15



16



17



18



19



20



21



22



23



24



25



26



27



28

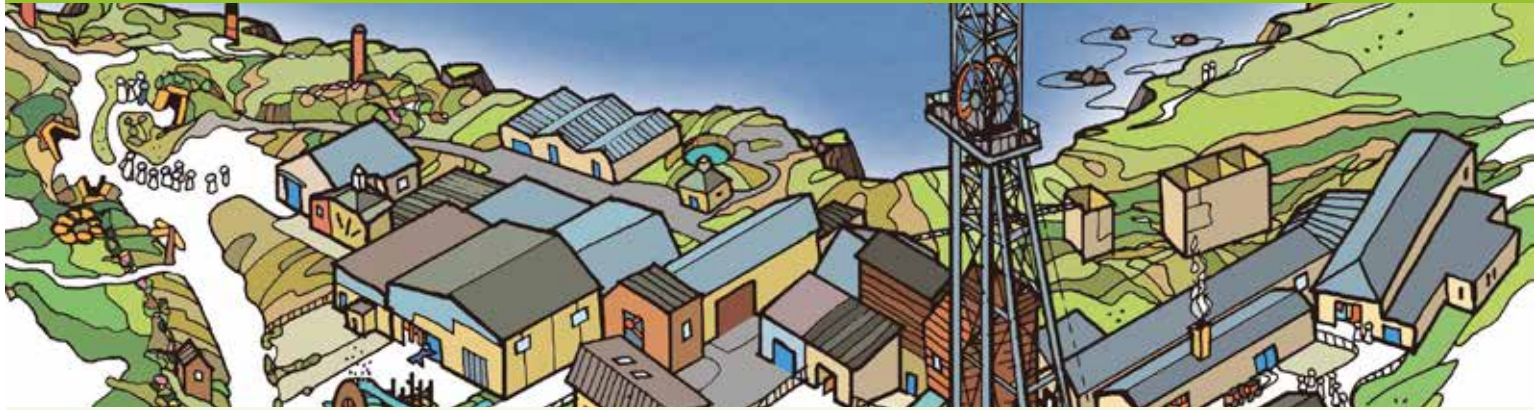


29



30





© Geevor 2017



**IN POLDARK'S FOOTSTEPS**

Mary Quiney of Carbis Bay WI

writes to thank the Environment and Public Affairs sub-committee for arranging the recent Poldark Day at Geevor Mine.

All those who attended had a most inspiring day learning about Geevor's tin mining

past, with entertaining and educational guides, taking us below ground and across the vast site of the mine, with

its majestic backdrop of the ocean.

For those of us who were able

to experience it, Mark, one of the guides, entertained us with a Cornish tune on his melodeon.



The **Bowgie** inn  
Crantock • Newquay

Claim your complimentary tea or coffee\*



www.bowgie.com  
TR8 5SE • Tel: 01637 830363

\* Valid any day. Americano, latte, cappuccino, teas & herbal teas. Simply cut out voucher and bring it along. One voucher per person. Valid until 31st December 2017.





### Christmas People Quiz Answers

- |                     |                        |
|---------------------|------------------------|
| 1. Ivor Emmanuel    | 16. Cybill Shepherd    |
| 2. Colin Bell       | 17. Carol Vorderman    |
| 3. Alan Partridge   | 18. Emmanuel Adebayer  |
| 4. Holly Hunter     | 19. Holly Willoughby   |
| 5. Noel Coward      | 20. Jon Snow           |
| 6. Alan Shepard     | 21. Judy Garland       |
| 7. Nicolas Cage     | 22. Nicholas Lyndhurst |
| 8. Rudolf Nureyev   | 23. Noel Fielding      |
| 9. Peter Snow       | 24. Robin van Persie   |
| 10. Holly Valance   | 25. Holly Johnson      |
| 11. Carol Thatcher  | 26. Rudolph Valentino  |
| 12. Angellica Bell  | 27. Shelley Winters    |
| 13. Nicolas Sarkozy | 28. Nicolas Anelka     |
| 14. Noel Edmonds    | 29. Noel Gallagher     |
| 15. Ringo Starr     | 30. Robin Williams     |

# "I walked in, in pain, and walked out pain free!"

**Jo Dixon is a Marine Research Scientist at Plymouth Marine Laboratories; she also competes in dressage, breeds horses, trains riders at competition level and she has four lively dogs - so her life is very active.**

The quality of Jo's lifestyle was threatened by pain in the joints of both of her big toes. Advice from specialists was to have steroid injections to manage the pain, or an operation to fuse the joints. neither option was attractive, so Jo paid a visit to Foot Solutions.

"It was incredible," said Jo, "I walked in, in pain, and walked out pain free!"

Pressure distribution measurement, and 3D contour mapping - all part of her free

assessment - showed that only a small portion of her feet was in contact with the ground due to her high arches. This put severe strain on her big toe joints. "I also had referred pain in my knees and hips," she added.

This is a problem that Foot Solutions' expert staff see a lot, and the initial, help given was an off-the-shelf orthotic (an insert to spread the weight more evenly through her feet).

At the same time, Jo ordered a pair customised arch supports and chose shoes from a wide range to suit her style and needs.

"The staff are really knowledgeable and helpful. The options and advice I received was amazing. I can now walk correctly - I've even got orthotics for my wellies and a pair of wedding shoes!"

The immediate pain relief

was enhanced even further once her custom-made inserts arrived. "I was so relieved when I used the off-the-shelf version," said Jo, "but when I got the customised orthotics - wow!"

Jo, like many customers whose quality of life has been improved, has recommended Foot Solutions to friends and family. Her Dad has diabetes - Jo is taking him to see the team very soon.

"I would say to anyone who has foot pain - go to Foot Solutions!"



**FOOT SOLUTIONS**

**34 Royal Parade,  
Plymouth PL1 1DU  
t: 01752 222660**

[www.footsolutions.co.uk/plymouth](http://www.footsolutions.co.uk/plymouth)



**NOVEMBER/DECEMBER BIRTHDAYS**

Sheffield and District WI, 70th



**ST NEOT BLOSSOMS**

The last weekend in August was a highlight of the village year in St Neot when the entire community came together to put on a festival to celebrate "The Rhythm of Life" and to raise money for the chapel and church. Naturally, WI members played their part from flower arranging to yarn bombing to catering. It was a long weekend, beginning on Friday and ending on the evening of the Bank Holiday Monday. By great good fortune, the sun shone throughout which encouraged hundreds of visitors to the village in their sun hats and sandals. They found a great deal to look at from the beautiful floral displays in the church to the wonderfully inventive exhibits of the Land Art Trail. The trail led through the community garden, across the river and along the street. In addition there were market stalls, a craft fair, an archaeological exhibition, a Smite competition, live music and a duck race, not to mention a café for homemade cake and a cup of tea as well as the meals and snacks which were served all day in the village hall, thanks to a team of cooks, bakers and human dishwashers.

**CARNIVAL TIME IN GRAMPOUND**



For the last four years, Grampound WI have entered a float in the Village Carnival Parade held after the Village Fête on the first Saturday in September. On two of the occasions, the Grampound ladies have won outright, on the third they came second, and this year they were joint first with a float entitled *The Atlantis WI*. They were all dressed as mermaids, with a lot of the costumes especially made by a member of Grampound WI.

**DOUBLE CELEBRATION FOR GULVAL WI**



Gulval WI celebrated their 80th birthday twice this year! They held a cream tea in August, which was very well attended by members from Gulval and other WIs, friends and lots of people from the community. The second celebration was a dinner at The Old Quay House in Lelant. Present were members, prospective members, family and friends. Special guests were Barbara Corbett, Federation Chairman, along with her husband; and Adviser Liz Anderson and her husband. Also present were Joan Matthews, Cath Matthews and Jane Hocking whose respective mother-in-law

and grandmother was a founding member of Gulval WI. The longest serving member, Elizabeth Hollow, who joined in 1964, was also present. Everyone enjoyed an excellent meal and a most enjoyable evening.

**PLASTIC PERIL IN DOWNDERRY AND SEATON**



Downderry and Seaton WI joined in their local carnival, which was held in July. Members wore costumes made from plastics they found on the beach, including plastic bottle tops. The ladies admit they were a comical group, but the Plastic Peril theme prompted a great deal of interest from the onlookers. Downderry and Seaton WI member Nora Karseras said, "We may save the fish after all!"

**FLOWER ARRANGING IN CLAY COUNTRY**  
St Stephen-in-Brannel, Trevisco & Trethosa and St Dennis WIs enjoyed a fabulous floral demonstration from Angela Hyland at Lanjeth Village



Hall recently. The joint meeting was hosted by St Stephen-in-Brannel WI, and members from all three enjoyed the refreshments that were provided. Angela, a highly skilled florist, demonstrated a fantastic array of arrangements while providing an insightful talk on the use of structure, balance and variety in floral arrangements. She used an interesting selection of greenery and flowers in all the arrangements, some of which came from her own garden. Lucky raffle winners were able to take the beautiful arrangements home. It was a great evening for the members from all three WIs.

**A LANDMARK FOR LOCAL WI MEMBER**



Marion Yelling, a dual member of Carbis Bay WI and St Ives WI, celebrated 65 years of WI membership this September. Marion started at Gillingham WI in Dorset. When she moved to Cornwall, she joined St Ives WI, and later was a founder member of Carbis Bay WI. Carbis Bay WI recognised Mary's achievement at their September meeting, with Federation Chairman (and fellow Carbis Bay WI member) Barbara Corbett presenting her with a card and a bouquet of flowers. All the members at Carbis Bay are extremely proud of Marion. She never misses meetings or outings and has taken on every committee role imaginable over the years.





# CornwallCare

**We are the largest care provider in Cornwall.  
We are a not-for-profit organisation and a registered charity, giving practical assistance for all types of care.**

*“We believe in going above and beyond offering high quality care, going that extra mile to improve lives every day.”*

## Home Care

Our Home Care team provides a quality, flexible and friendly service, and because we are the largest care provider in Cornwall, we can guarantee our clients will always be given the care they need.

Our Home Care service is for people who wish to stay living independently in their own homes. We have over 200 dedicated staff delivering care from an hour a week to 24 hours a day.

At Cornwall Care we recognise the importance of independent living; we understand that having the opportunity to live independently in your own home can have an enormous impact on your confidence and wellbeing. We also know how difficult it can be to find the right care for you.

## Providing Care in Cornwall

As well as offering residential, nursing and dementia care in our 16 care homes, Cornwall Care helps over 1,000 people across the county to live independently in their own homes.

## Making the Right Decisions

It can be difficult to make decisions about care, so we're here to help and support you – from finding the right kind of plan for you or your loved one, to offering advice and guidance with funding and claims. Our team really love what they do and it's important to us at Cornwall Care that everyone we work with feels comfortable and happy. We like to form close relationships with the people we look after and their families, tailoring our care to each individual's needs.

**For further information, ring: 01872 261787  
or email: [welcome@cornwallcare.org](mailto:welcome@cornwallcare.org)  
Please quote: WI-Dec2017**





# Delicious & delivered

**NEW**

Autumn &  
Winter 2017  
Brochure

FREE NATIONWIDE DELIVERY | MEALS FROM ONLY £2.99  
OVER 300 TASTY RECIPES | NO CONTRACT, NO COMMITMENT



Call us today or go online for your **FREE** brochure

**01326 378444**

[wiltshirefarmfoods.com](http://wiltshirefarmfoods.com)



Wiltshire Farm Foods